



## Tankerton, Whitstable

£375,000 Leasehold

...for Coastal, Country & City living.



• 95/97 Tankerton Road . Whitstable . Kent CT5 2AJ . t: 01227 266441 . f: 01227 266443  
e: sales@christopherhodgson.co.uk, lettings@christopherhodgson.co.uk . [www.christopherhodgson.co.uk](http://www.christopherhodgson.co.uk)

Estate agency services are provided by Christopher Hodgson Limited, a company incorporated and registered in England and Wales with the number 07108955 whose registered office address is at Camburgh House, 27 New Dover Road, Canterbury, Kent CT1 3DN. Lettings and valuations are provided by Christopher Hodgson and Helen Hodgson trading as Christopher Hodgson.

# Tankerton, Whitstable

Apartment 4, 127 Tankerton Road, Tankerton, Whitstable, Kent, CT5 2AN

An exceptional first floor apartment forming part of this prestigious new development, situated in a prime central location moments from the seafront, shops and amenities, and accessible to Whitstable station.

The development has been finished to a high specification throughout with stylish kitchens and bathrooms and the building is serviced by a lift to all floors.

The bright and spacious accommodation totalling 721 sq ft (67 sq m) is arranged to provide an open-plan living room with contemporary kitchen, two double bedrooms, a large bathroom and a utility cupboard. The principal bedroom has a balcony with views towards the sea.

Outside, there is an allocated parking space and cycle store.



## Location

Tankerton Road is a desirable location being conveniently situated for access to the centres of both Whitstable and Tankerton, local shops, Tankerton slopes and seafront, bus routes and other amenities. Whitstable mainline railway station offers frequent services to London (Victoria) approximately 80mins and London (Cannon Street) approximately 88 mins. The high speed Javelin service provides access to London (St Pancras) with a journey time of approximately 73 mins. Whitstable is less than 1 mile distant and provides a range of shopping facilities including mainstream retailers and boutique shops as well as a variety of cafes, bars, well regarded restaurants and working harbour for which the town has become renowned. The A299 is accessible providing a dual carriageway link to the M2/A2 giving access to the channel ports and connecting motorway network.

## Accommodation

The accommodation and approximate measurements are:

### • Entrance Hall

17'1" x 3'6" (5.21m x 1.09m)  
at maximum points

### • Living Room with Kitchen

20'11" x 17'10" (6.40m x 5.44m)  
at maximum points

### • Bedroom 1

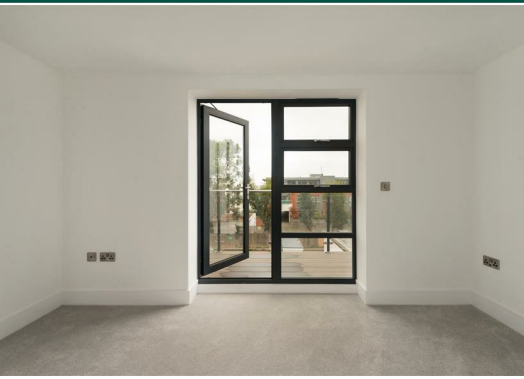
13'3" x 9'3" (4.06m x 2.82m)  
at maximum points

### • Balcony

13'1" x 4'5" (4.00m x 1.36m)  
at maximum points

### • Bedroom 2

12'11" x 9'3" (3.94m x 2.82m)  
at maximum points



- **Bathroom**

9'3" x 6'7" (2.82m x 2.01m)  
at maximum points

- **Utility Cupboard**

- **Parking**

One allocated parking space

**N B**

Images and video content are from the same development and are indicative of 'type of finish' only.

**Lease**

The property is being sold with the remainder of a 999 year lease created in 2021 (subject to confirmation from vendors solicitor).

**Service/Maintenance Charge**

The annual service charge for 2021/2022 is £1,593.89 (subject to confirmation from the vendors solicitors)

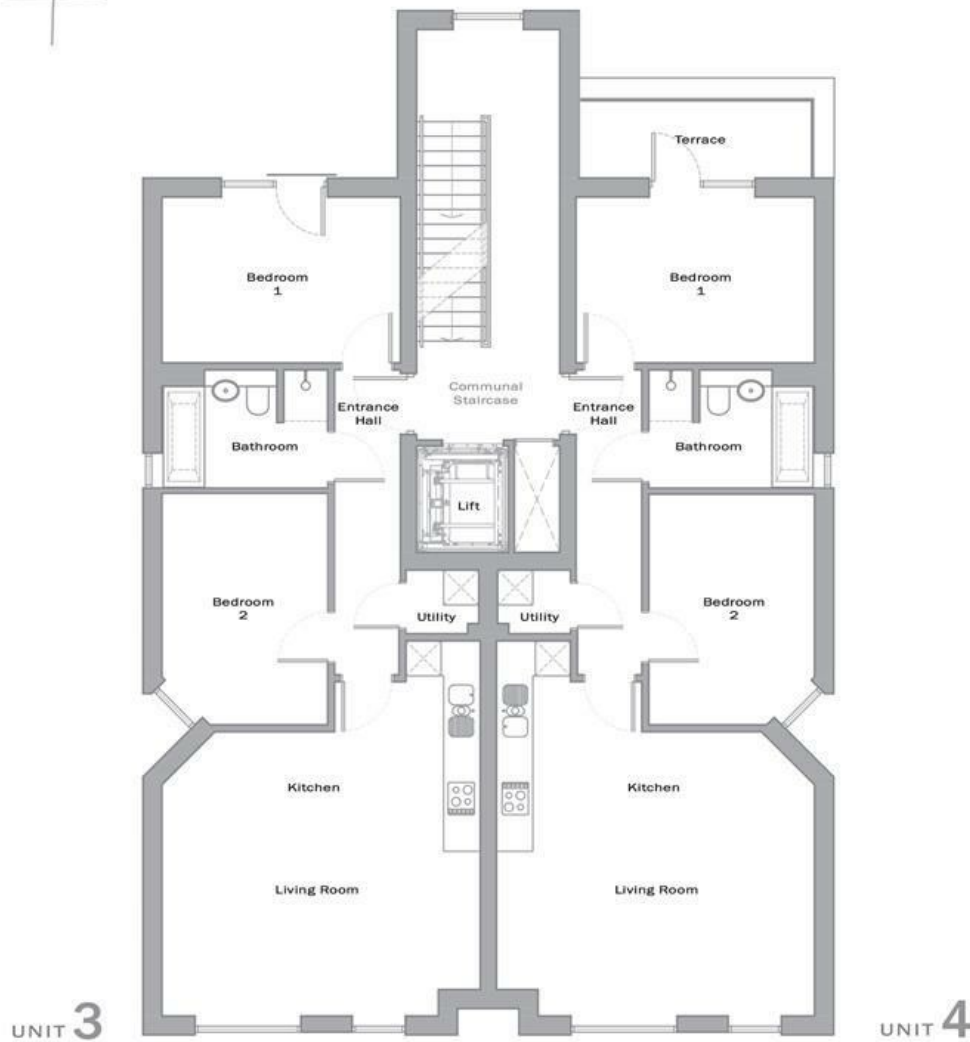
**Ground Rent**

£250 per annum (to be confirmed by the vendors solicitors).

**Video Tour Available**

Please view the video tour for this property, and contact us to discuss arranging a physical viewing.

127



Council Tax Band to be confirmed

Viewing: STRICTLY BY APPOINTMENT WITH AGENTS .t: 01227 266441

Christopher Hodgson Estate Agents for itself and as for the vendor or lessor (as appropriate) gives notice that: 1 These particulars are only a general outline for the guidance of intending purchasers or lessees and do not constitute in whole or in part an offer or a Contract. 2 Reasonable endeavours have been made to ensure that the information given in these particulars is materially correct but any intending purchaser or lessee should satisfy themselves by inspection, searches, enquiries and survey as to the correctness of each statement. 3 All statements in these particulars are made without responsibility on the part of Christopher Hodgson Estate Agents or the vendor or lessor. 4 No statement in these particulars is to be relied upon as a statement or representation of fact. 5 Neither Christopher Hodgson Estate Agents nor anyone in its employment or acting on its behalf has authority to make any representation or warranty in relation to this property. 6 Nothing in these particulars shall be deemed to be a statement that the property is in good repair or condition or otherwise nor that any services or facilities are in good working order. 7 Photographs may show only certain parts and aspects of the property at the time when the photographs were taken and you should rely upon actual inspection. 8 No assumption should be made in respect of parts of the property not shown in photographs. 9 Any areas, measurements or distances are only approximate. 10 Any reference to alterations or use is not intended to be a statement that any necessary planning, building regulation, listed building or any other consent has been obtained. 11 Amounts quoted are exclusive of VAT if applicable. 12 Whilst reasonable endeavours have been made to ensure the accuracy of any floor plan contained in these particulars, all measurements and areas are approximate and no responsibility is taken for any error, omission or mis-statement. This plan is for illustrative purposes only and should be used as such by any prospective purchaser. 13 Any mapping contained within these particulars is for illustrative purposes only and should be used as such by any prospective purchaser. No responsibility is taken for any error, omission or mis-statement. 14 Any computer generated images contained within these particulars are for illustrative purposes only and should be used as such by any prospective purchaser.

